

71°24'10"W 71°24'5"W 71°24'0"W 71°23'55"W 71°23'50"W 71°23'45"W 71°23'40"W 71°23'35"W 71°23'30"W 71°23'25"W 71°23'20"W 71°23'15"W

41°27'50"N
41°27'45"N
41°27'40"N
41°27'35"N
41°27'30"N
41°27'25"N
41°27'20"N
41°27'15"N
41°27'10"N
41°27'5"N
41°27'0"N
41°26'55"N

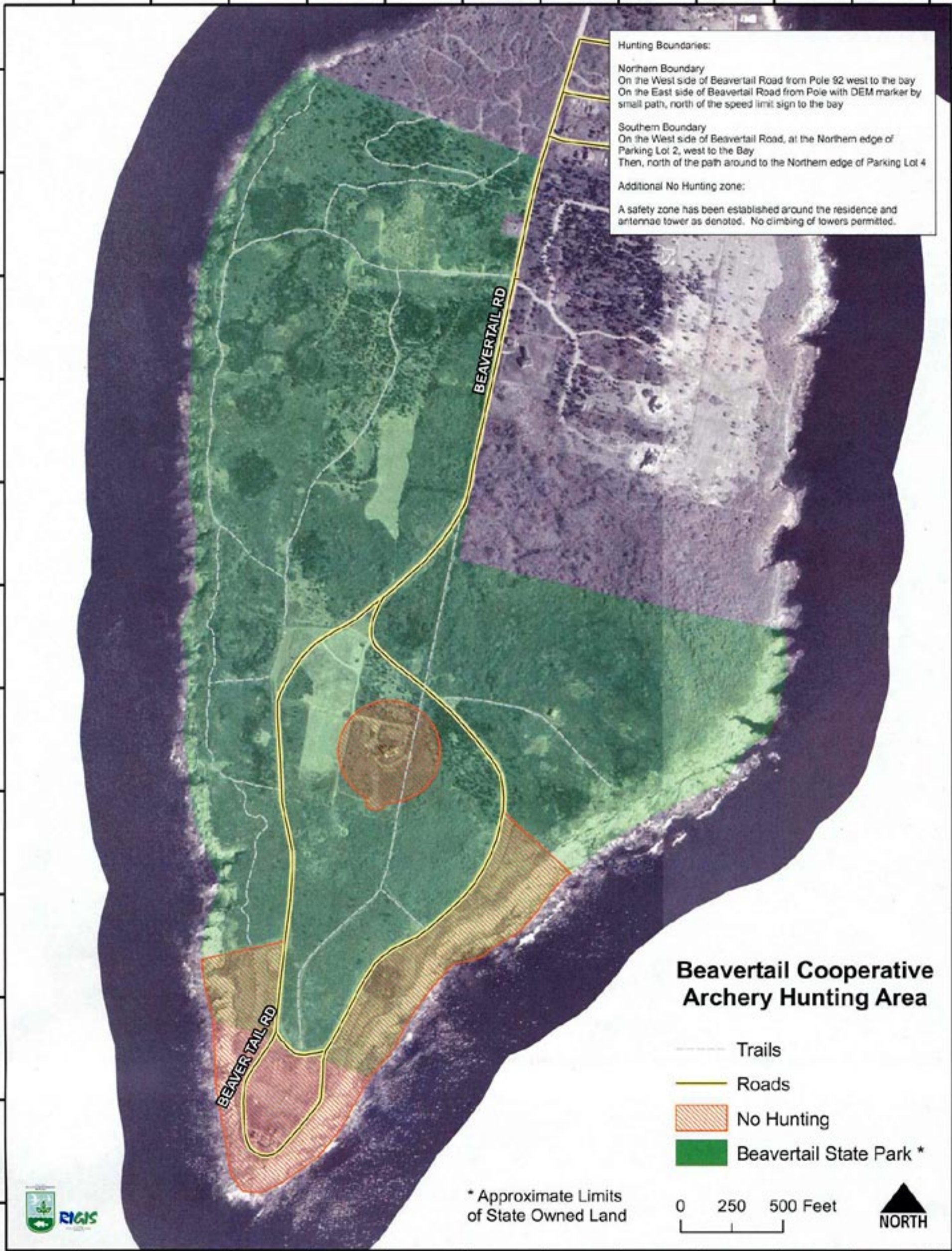
41°27'50"N
41°27'45"N
41°27'40"N
41°27'35"N
41°27'30"N
41°27'25"N
41°27'20"N
41°27'15"N
41°27'10"N
41°27'5"N
41°27'0"N
41°26'55"N

Hunting Boundaries:

Northern Boundary
On the West side of Beavertail Road from Pole 92 west to the bay
On the East side of Beavertail Road from Pole with DEM marker by small path, north of the speed limit sign to the bay

Southern Boundary
On the West side of Beavertail Road, at the Northern edge of Parking Lot 2, west to the Bay
Then, north of the path around to the Northern edge of Parking Lot 4

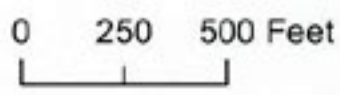
Additional No Hunting zone:
A safety zone has been established around the residence and antennae tower as denoted. No climbing of towers permitted.



Beavertail Cooperative Archery Hunting Area

-  Trails
-  Roads
-  No Hunting
-  Beavertail State Park *

* Approximate Limits of State Owned Land



71°24'10"W 71°24'5"W 71°24'0"W 71°23'55"W 71°23'50"W 71°23'45"W 71°23'40"W 71°23'35"W 71°23'30"W 71°23'25"W 71°23'20"W 71°23'15"W